



Developed for the modern commuter, this shirt has the style and functionality needed for work, travel and every stop in-between.

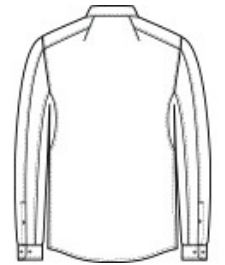
- 3.8-ounce, 56/38/6 cotton/poly/spandex
- Open collar
- Mitered woven label
- Angled shoulder yoke with back seaming
- Pieced sleeves with underarm panels
- Button-through sleeve plackets
- Two-button adjustable cuffs
- Woven OGIO badge at front hem
- Shirrtail hem can be worn untucked

**CARE INSTRUCTIONS**

Machine wash cold with like colors, only non-chlorine bleach if needed. Tumble dry low, warm iron if needed.

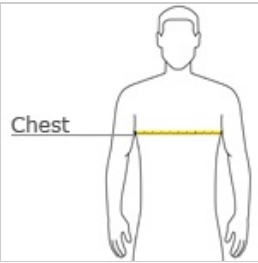


front



back

**HOW TO MEASURE**




**CHEST WIDTH**

Measure under the arm and around the fullest part of the chest with arms down, keeping tape horizontal.

**SIZE CHART**

	XS	S	M	L	XL	2XL	3XL	4XL
Chest	32-34	35-37	38-40	41-43	44-46	47-49	50-53	54-57

**COLOR INFORMATION**

 Blacktop PMS BLACK C	 Gear Grey Heather PMS COOL GREY 10C	 Metal Blue Heather PMS 644C	 White
---	---	--	--